

WEx Panels - Relay Panels for KO Mount Relays



Project Name: _____
 Part Numbers: _____ Date: _____

Features

- Standard sizes range from 6 to 72 relays
- A barrier is provided to separate the line and low voltage areas of the panel. The barrier has knock outs and is specially shaped for mounting WR-6221K-82 relays and the transformer.
- A DIN rail is installed in the center of the enclosure. The DIN rail provides mounting for optional controls.
- Enclosure walls have knockouts located so that panels of same horizontal or vertical dimension can be joined with conduit nipples.
- Panels that have hinged covers have a lockable latch.

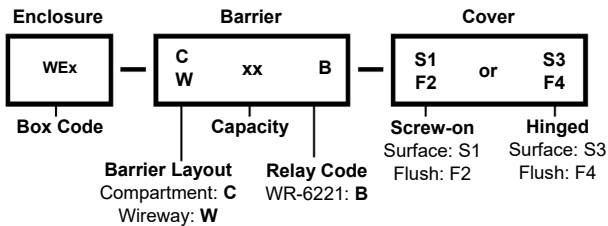
Douglas WEx series relay panels are a versatile line of panels used for WR-6221K-82 KO mount relays.

Typical Applications: INSTALLATION & ASSEMBLY

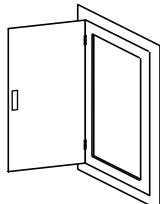
- WEx series relay panels for WR-6221K-82 KO mount relay are supplied with steel barrier(s) installed inside of the enclosure. The barrier(s) have 1/2" knock outs that are used to mount the transformer and WR-6221K-82 relays.
- WEx panels are primarily intended for field installation of relays and controls. WEx panels generally are not factory preassembled. To install the relay panel the following sequence is recommended:
 - 1) Mount the panel onto the wall and pull wires. It is recommended that all (or most) of the wires be pulled prior to installing any relays or other components. This will prevent component damage from the wire pulling operation.
 - 2) Relay line voltage terminals are sized for a maximum of 12AWG wire. For low voltage wiring 18AWG solid is recommended.
 - 3) Once the wires have been pulled, install relays into KO's. Make line connections to relays. To test circuit, turn circuit breaker off, use manual lever to turn relay on and then turn on the circuit breaker. This will help prevent relay contact welding due to dead shorts.
 - 4) Record which circuit the relay operates. Use blank panel schedule provided.
 - 5) Once the line circuits are connected and identified, install and wire low voltage controls (relay scanners, etc).

PART NUMBER	DESCRIPTION
WEx Panels	Relay Panels for KO Mount Relays

WEx Panels: Exploded View



WEx Panels: Exploded View

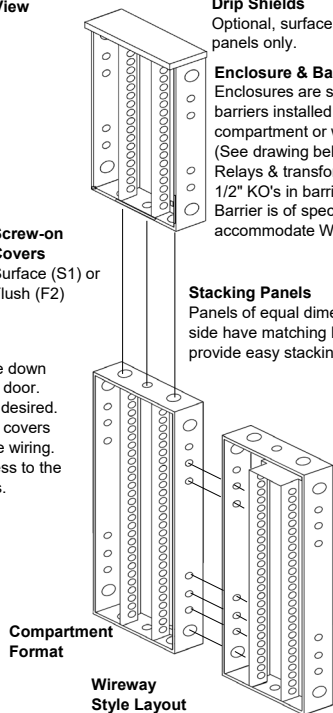


Hinged Covers
 Surface (S3) or Flush (F4).
 Install right side up or upside down for right-to-left or left-to-right door.
 Cover latch can be locked if desired.
 The trim of the hinged cover covers over some of the line voltage wiring.
 A space is left open for access to the relay's manual control levers.

Drip Shields
 Optional, surface cover panels only.

Enclosure & Barriers
 Enclosures are supplied with barriers installed in either the compartment or wireway format.
 (See drawing below)
 Relays & transformers mount thru 1/2" KO's in barrier.
 Barrier is of special shape to accommodate WR-6221K-82 relay.

Stacking Panels
 Panels of equal dimension on a side have matching KO pattern to provide easy stacking.



*Patent Pending

Rev 8/24/2022

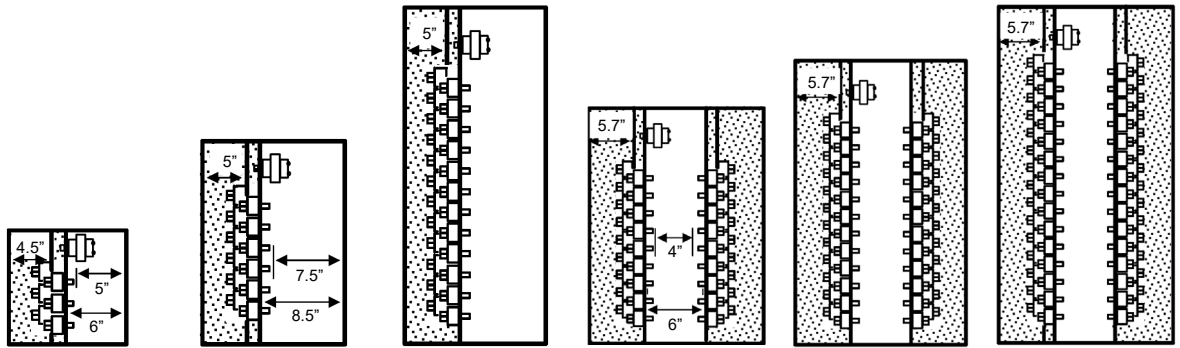
Douglas Lighting Controls

WEx Panels - Relay Panels for KO Mount Relays

Dimensions

Inches [mm]

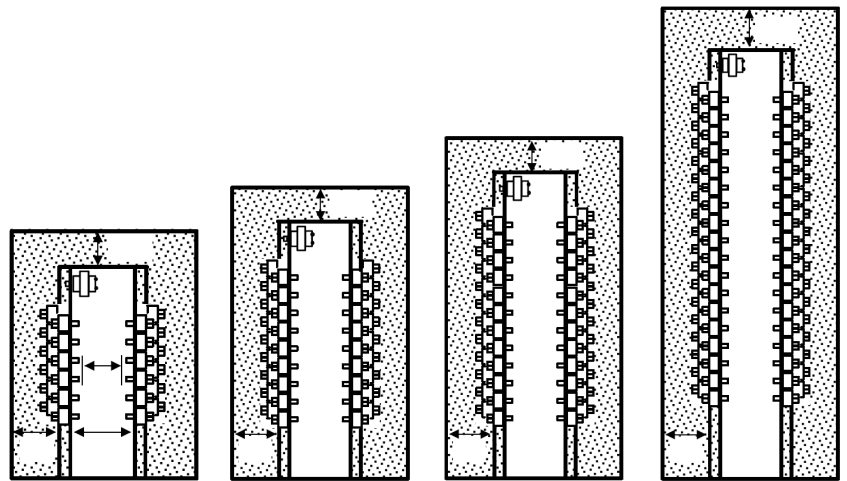
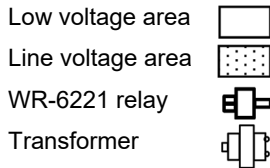
Compartment Style Barrier Layout



CAPACITY	6	12	24	36	48	60
PART No.	WE0 - C06B - **	WE1 - C12B - **	WE2 - C24B - **	WE3 - C36B - **	WE4 - C48B - **	WE6 - C60B - **
SIZE (H x W x D)	12 x 12 x 4.25	20 x 14 x 4.25	33 x 14 x 4.25	27 x 20 x 4.25	33 x 20 x 4.25	39 x 20 x 4.25

** Add cover style number at end of P/N

Symbols



CAPACITY	24	36	48	72
PART No.	WE3 - W24B - **	WE4 - W36B - **	WE6 - W48B - **	WE8 - W72B - **
SIZE (H x W x D)	27 x 20 x 4.25	33 x 20 x 4.25	39 x 20 x 4.25	54 x 20 x 4.25

Technical Details

FUNCTIONALITY	<ul style="list-style-type: none"> Enclosures, barriers and covers are made of steel coated with ANSI/ASA 61 Grey. Coating is a heat fused, polyester epoxy finish applied on all surfaces.
APPROVALS	<ul style="list-style-type: none"> UL listed, CSA approved EEMAC/NEMA 1 Standard
OPTIONS	<ul style="list-style-type: none"> Hinged, surface or flush covers. Covers are reversible for either left-to-right or right-to-left door opening. Driphoods (surface mount only). Voltage barriers to divide line voltage compartment for different line voltages.
WARRANTY	<ul style="list-style-type: none"> Standard 5-years